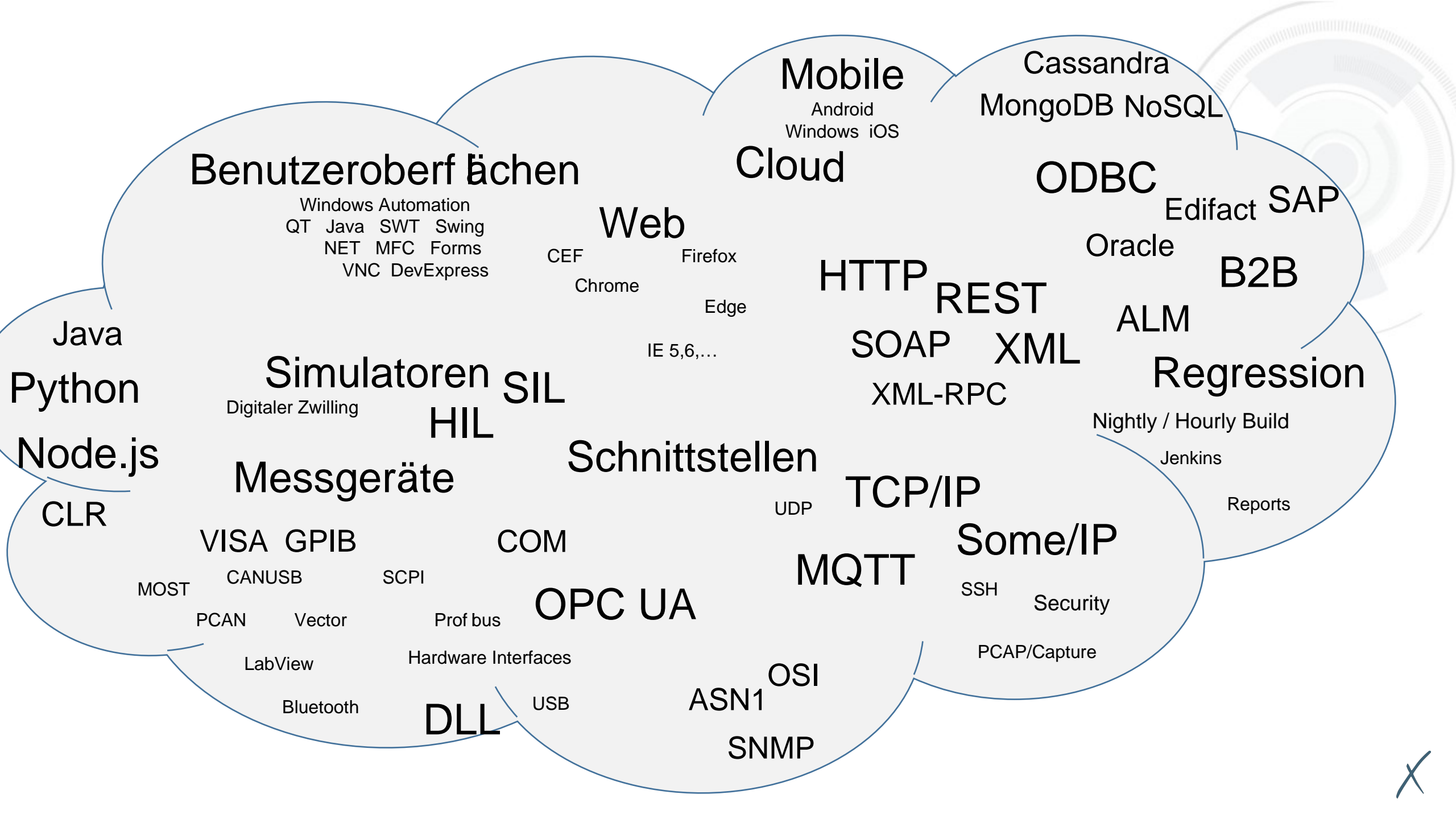


„End-to-End-Tests vernetzter Systeme“



Claus Gittinger





Benutzeroberflächen

Windows Automation
QT Java SWT Swing
NET MFC Forms
VNC DevExpress

Mobile

Android
Windows iOS

Cloud

Cassandra
MongoDB NoSQL

ODBC

Edifact SAP
Oracle

Web

CEF Firefox
Chrome Edge
IE 5,6,...

HTTP

REST

SOAP

XML

XML-RPC

B2B

ALM

Regression

Nightly / Hourly Build

Jenkins

Reports

Java

Python

Node.js

CLR

Simulatoren

Digitaler Zwilling

SIL

HIL

Schnittstellen

UDP

TCP/IP

Some/IP

SSH

Security

Messgeräte

VISA GPIB

COM

OPC UA

MQTT

PCAP/Capture

MOST

CANUSB

SCPI

PCAN

Vector

Prof bus

LabView

Hardware Interfaces

Bluetooth

DLL

USB

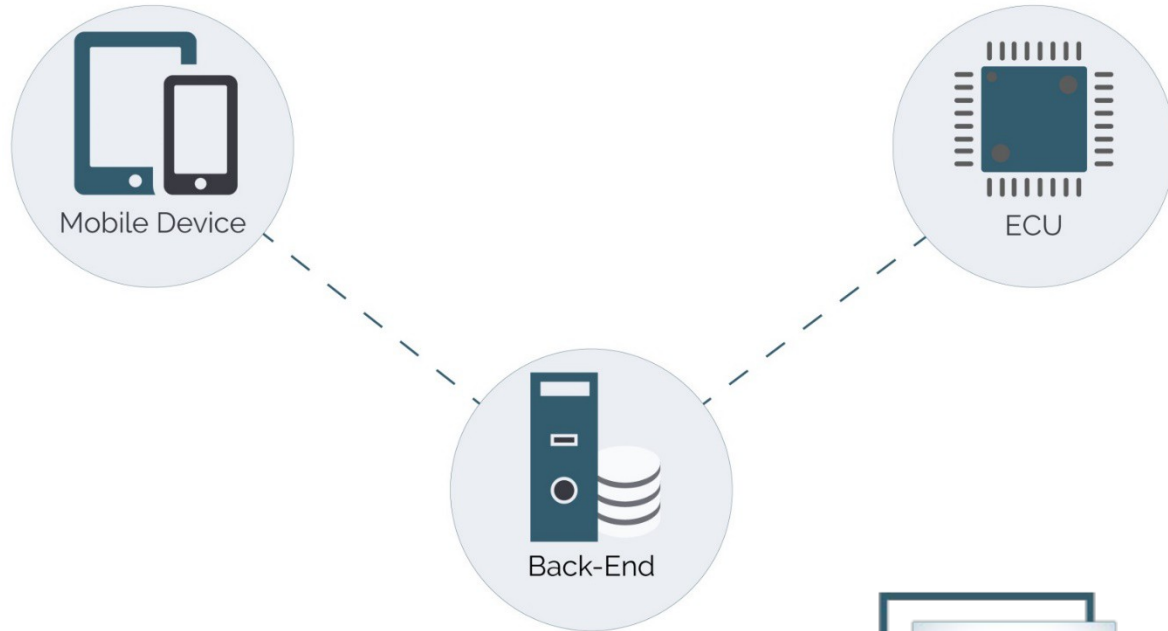
ASN1

OSI

SNMP

X

End-to-End Test



- Testen aller Komponenten in einem Testlauf
- Simulation fehlender Komponenten
- Betriebssystemübergreifend

Frontend unter Windows

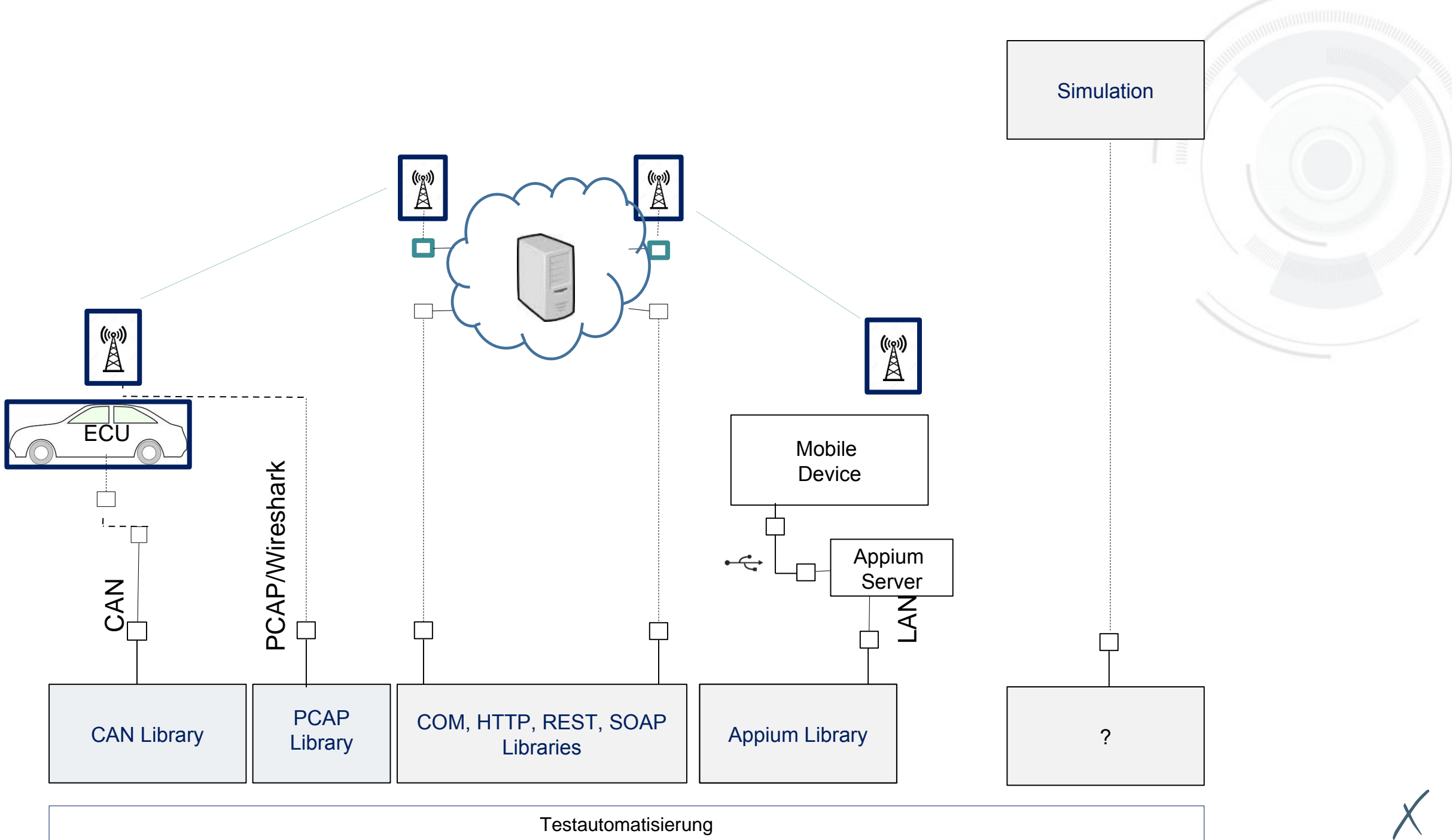
plus mobile Geräte

The complex block contains a list of three bullet points. Below the list are two icons: one showing a monitor with a Windows logo, and another showing a smartphone with a plus sign.

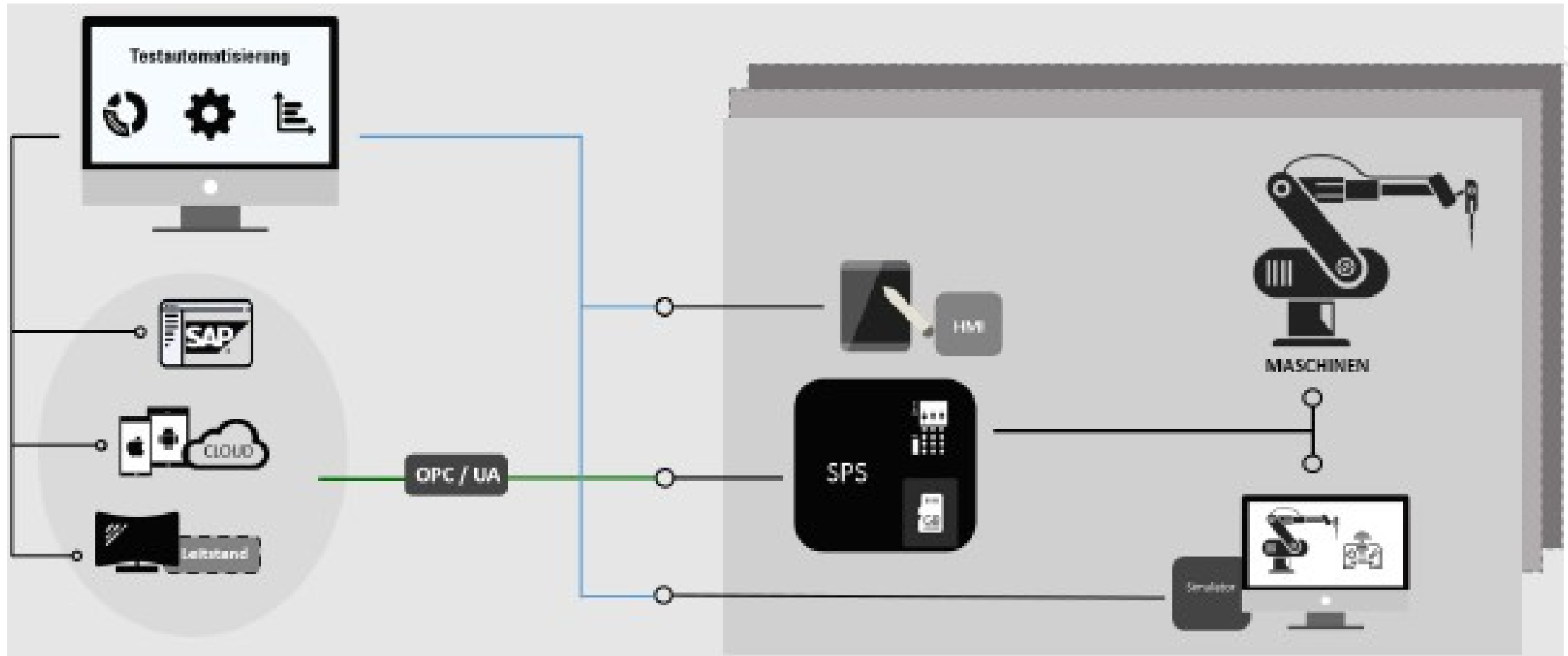


gemeinsam testen?

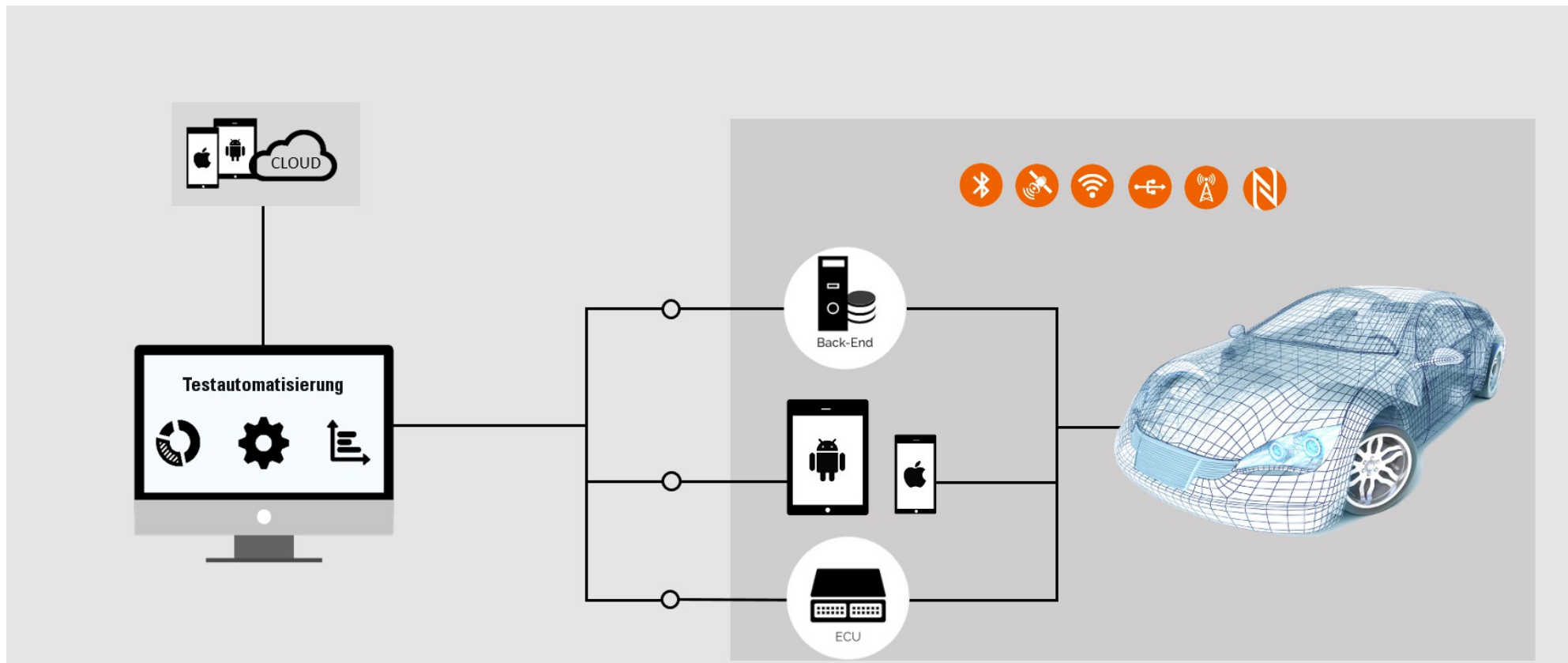




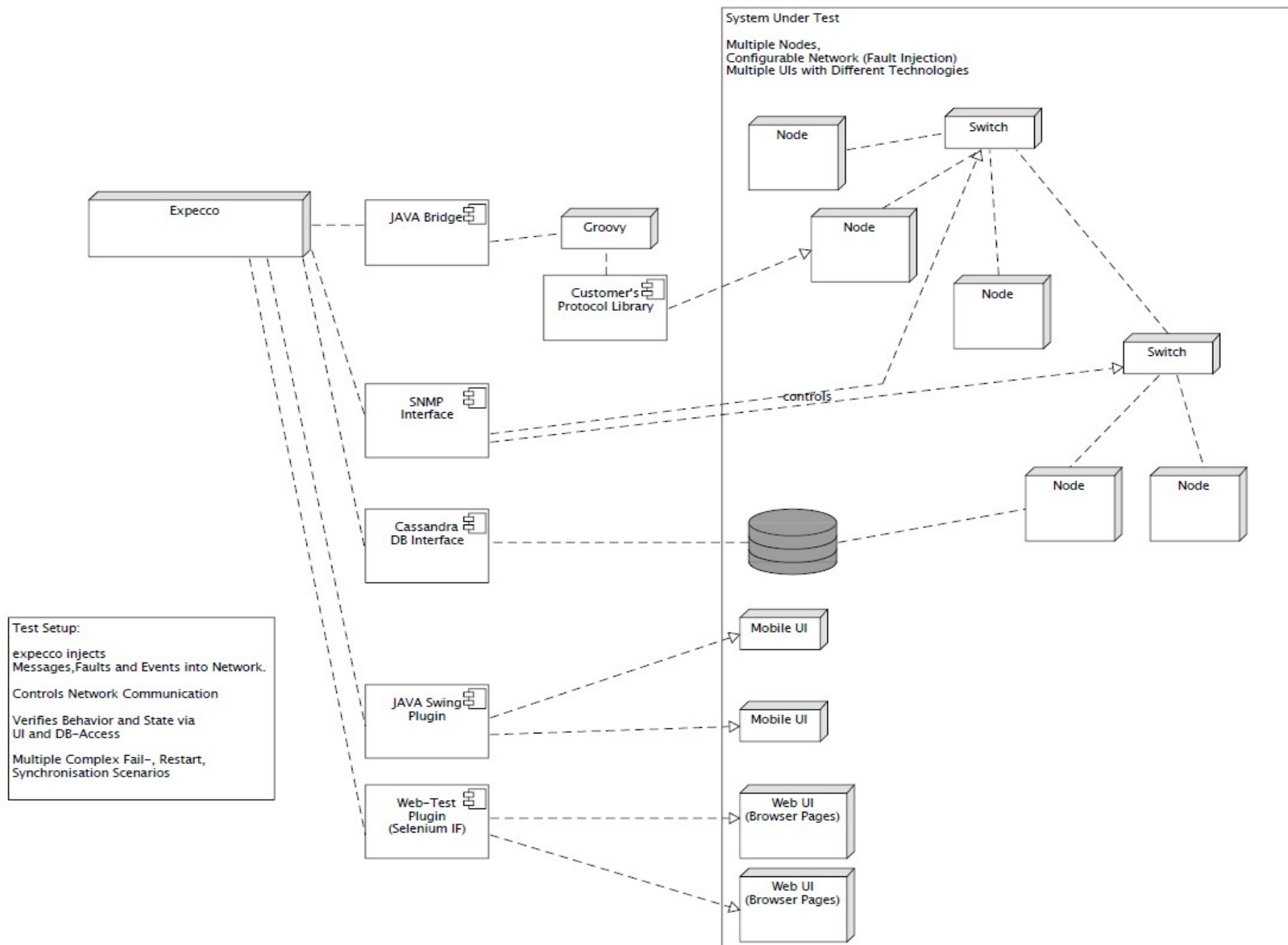
X



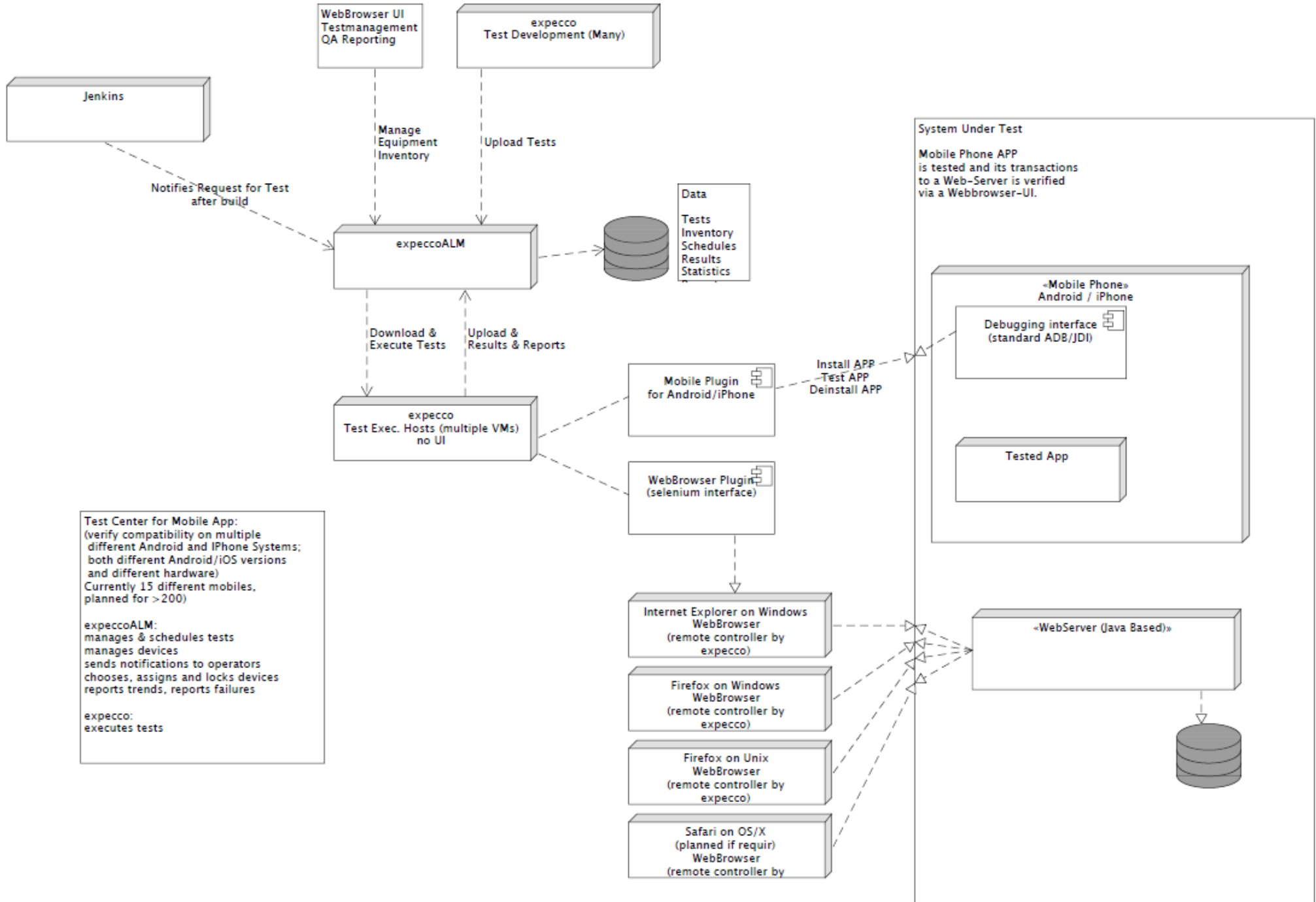
X



X



X



X

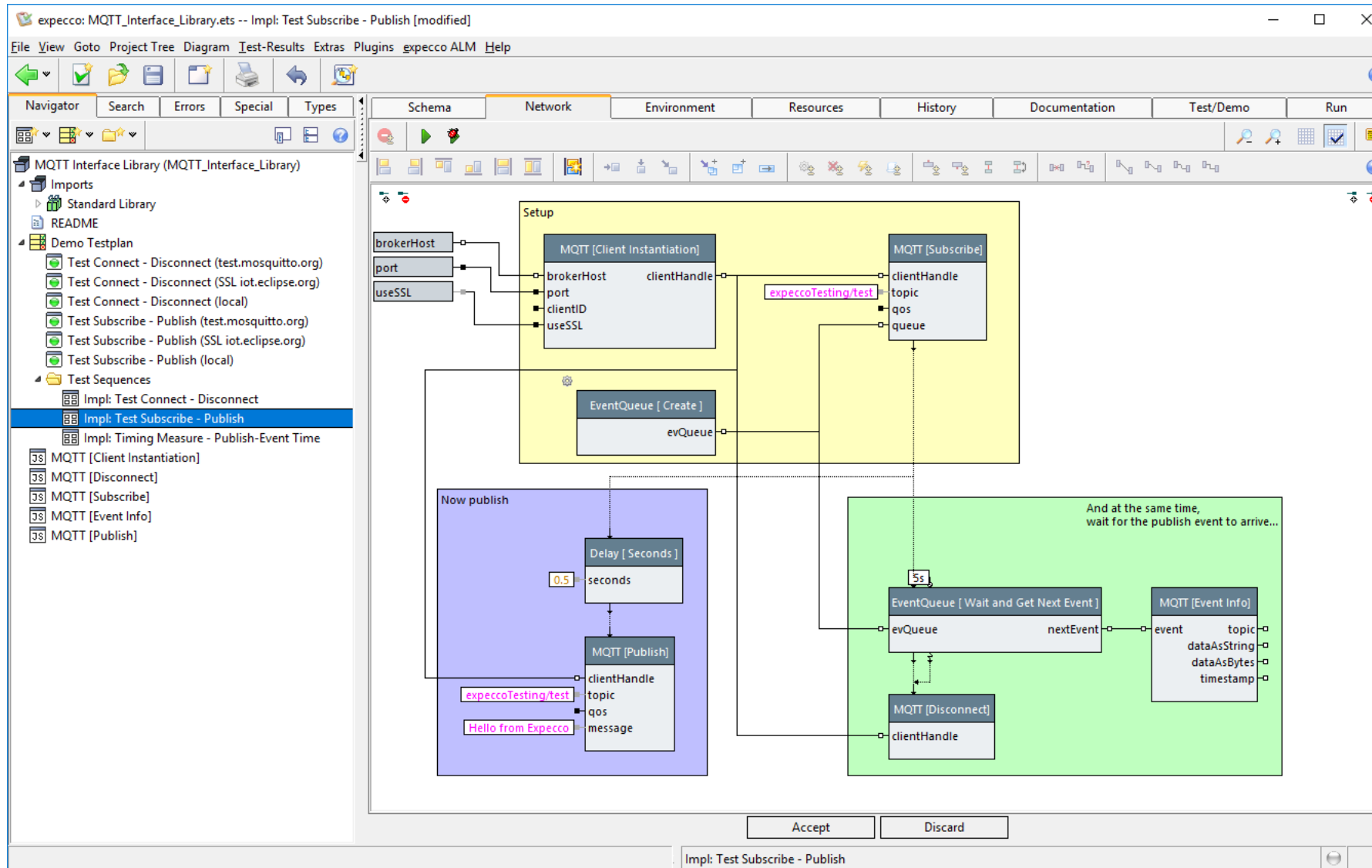
Ressourcenmanagement

- Testbed / Devices
- Auf- und Abbau
- Personal

Report

- Details
- Log der Messwerte
- Archivierung und Zuordnung

Modellierung / Abstraktionsebene



Vielen Dank für Ihre
Aufmerksamkeit

Fragen?

